

Garfield Park Cultural Landscape Report



Prepared for
The Friends of Garfield Park
Indianapolis, Indiana

Prepared by
Heritage Landscapes
Preservation Landscape Architects & Planners
Charlotte, Vermont & Norwalk, Connecticut

*Garfield Park: Cultural Landscape Report
History, Conditions, Change, Use & Preservation Treatment*



September 2004

Prepared for
The Friends of Garfield Park
In cooperation with
Indy Parks & Recreation
Indianapolis, Indiana

Prepared by
Heritage Landscapes
Preservation Landscape Architects & Planners
501 Lake Road Charlotte, Vermont & 34 Wall Street, Norwalk, Connecticut
Patricia M. O'Donnell, FASLA, AICP, Principal
Bryne Riley, Associate ASLA, Ann Milovsoroff, FASLA, Glenn Stach, ASLA,
Gregory W. De Vries, Associate ASLA, with Mary Ellen Gadski, Historian for Local Research

Cover & Dedication Photograph Credits

Cover Photograph: View of reinforced concrete bridge over Pleasant Run with people at rail, 1908, Garfield Park. Courtesy of Indianapolis Historical Society.

Inside Cover Photograph: Pagoda area, Heritage Landscapes, Preservation Landscape Architects & Planners, 2003.

Dedication: Top image view of park scenery along Pleasant Run with bridge and people, circa 1910. Courtesy of Indiana Historic Preservation Commission.

Bottom: View of Pleasant Run and recently replaced pedestrian bridge near Burrello Family Center, Heritage Landscapes, Preservation Landscape Architects & Planners, 2003.

© Copyright, September 2004

Friends of Garfield Park & Heritage Landscapes. All rights reserved.

Copies and citations are permitted with full credits given to the copyright holders and the authors.

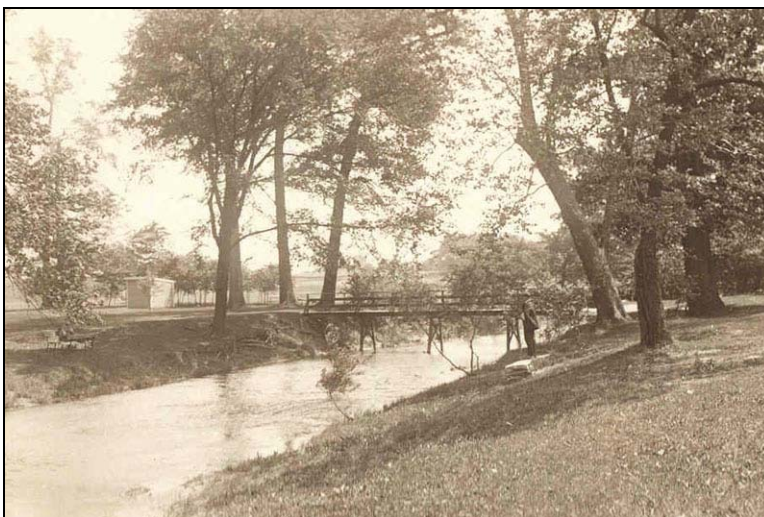
Principal authors are Patricia M. O'Donnell, FASLA, AICP, Bryne Riley, Associate ASLA, Ann Milovsoroff, FASLA, and Glenn Stach, ASLA, staff of Heritage Landscapes, Preservation Landscape Architects & Planners.



The production of this Cultural Landscape Report was made possible by the generous support of the Efroymsen Fund of the Central Indiana Community Foundation, the Friends of Garfield Park, Inc., Indy Parks & Recreation, and the Marion County Historic Preservation Fund.



GARFIELD PARK CULTURAL LANDSCAPE REPORT DEDICATION



On behalf of the Friends of Garfield Park this report is dedicated to Lucille Wahl, a loyal friend and benefactor. A school teacher, community volunteer and lifetime Southsider, she loved two things-- teaching science and mathematics to young minds, and Garfield Park. Lucille Wahl carried out her work raising funds, coordinating volunteer efforts, and advocating for Garfield Park with quiet, unassuming dignity. She was truly in every sense of the phrase a Friend of Garfield Park.



GARFIELD PARK CULTURAL LANDSCAPE REPORT



GARFIELD PARK CULTURAL LANDSCAPE REPORT

Acknowledgements

The Garfield Park Cultural Landscape Report project would not have been possible without the generosity of the funding organizations: The Efroymsen Fund of the Central Indiana Community Foundation, the Friends of Garfield Park, Inc., Indy Parks & Recreation, and the Marion County Historic Preservation Fund. The principal project sponsor, the Friends of Garfield Park (FGOP) have worked for several years to gather the resources to undertake this project. Founded in 1998 the FGOP mission is to ensure the preservation and continuation of the public benefits of Garfield Park through enhanced funding, effective advocacy and expanded stewardship. This Cultural Landscape Report is the largest planning project the FGOP has undertaken. It will provide direction and priorities for future FGOP's activities, including fundraising and stewardship. The FGOP board has advocated the development of the report to ensure present and future decision makers have the opportunity to appreciate the subtleties of historic park assets in the context of sound historic resource preservation practices. The importance of preserving the picturesque landscape is a difficult realization for many well-intentioned decision-makers to grasp. The most popular parks can be loved to the point of degrading the landscape and features that have caused it to be so highly valued by the community. The FGOP believes that this comprehensive document clearly establishes overall direction and sets important priorities for the long-term health and well-being of Garfield Park.

This cultural landscape report project has benefited from the efforts of many people for which the staff at Heritage Landscapes is grateful. The Friends of Garfield Park, a dedicated group of volunteers and support staff who work on behalf of the park, are first among those to recognize. Indy Parks & Recreation, steward of Garfield Park, has been very helpful in providing detailed information and insights. Heritage Landscapes also appreciates the time and effort interested citizens took to make comments, provide materials, complete user surveys, and attend meetings.

The historic research component of the work involved investigation of numerous repositories all of which served to reveal crucial details about the history of Garfield Park. The excellent services of Mary Ellen Gadski, a talented local historian, were a valuable asset to the research conducted by Heritage Landscapes and Ms. Gadski. This thorough investigation involved the review of records held by regional repositories, including the Indiana State Library, the Indiana Historical Society, the Indianapolis Central Public Library, Indy Parks & Recreation, the Indianapolis Department of Metropolitan Planning, Historic Preservation Commission, the Kansas City Public Library, Missouri Valley Special Collections, and individual oral history testimonies of several persons associated with the park. Included among these were the park history records kept by Lucille Wahl and loaned to us by Richard Hornberger, FGOP board member.

GARFIELD PARK CULTURAL LANDSCAPE REPORT

A wide variety of materials including published and unpublished text, annual park reports, historic photographs, historic aerial photographs, plans, and surveys were gathered to provide evidence of property character and physical conditions. As in any project addressing historic properties, more research can uncover additional details about the evolution of Garfield Park, however, in this research effort the project team has gathered voluminous documentation and gained a thorough understanding of the physical evolution and character of this important historic public park through time.

Particular thanks go to Georgia Cravey at the Indianapolis Central Public Library, Suzanne Crowe and Susan Sutton at the Indiana Historical Society, Barney Thompson and Jill Costill at the Indiana State Library, David Baker and Emily Mack at the Indianapolis Department of Metropolitan Planning/ Historic Preservation Commission, and Sherrie Smith at the Kansas City Public Library's Missouri Valley Special Collections archives. Landscape architecture colleagues Meg Storrow, Storrow Kinsella Associates, Indianapolis, and Camille Fife and Thomas Salmon of The Westerly Group in Farmersburg, Indiana graciously provided access to documents gathered in their related projects. In addition, Don Colvin, Michael Krosschell, and the Garfield Park staff of Indy Parks & Recreation have been extremely helpful.

We acknowledge all of these contributions with gratitude. It has been our privilege to work with community members who value Garfield Park. With their voices and commitment they have aided us in developing this comprehensive document that will serve as a benchmark guiding this important public landscape, and the actions of the Indianapolis community on its behalf, long into the future.



GARFIELD PARK CULTURAL LANDSCAPE REPORT

Table of Contents

DEDICATION	iii
ACKNOWLEDGEMENTS	v
LIST OF FIGURES	xi
LIST OF PLANS	xix
CHAPTER I: INTRODUCTION, PROJECT SCOPE & METHODOLOGY	I.1
A. Introduction	I.1
B. Introduction to Cultural Landscapes & Reports	I.1
C. Scope of Work and Methodology	I.2
CHAPTER II: GARFIELD PARK HISTORY	II.1
A. Early Years Before Park Development	II.1
B. Initial Development 1890 to 1907	II.2
C. Kessler Park Design & Implementation 1908 to 1939	II.5
D. Recent Park Evolution 1940 to 1980	II.12
E. Park Renewal 1980 to 2003	II.15
CHAPTER III: 1930s AS-BUILT CHARACTER	III.1
A. Introduction	III.1
B. 1930s Landscape Character	III.3
LU1: The Conservatory & Sunken Gardens	
LU2: Bean Creek & Pleasant Run	
LU3: Confederate Prisoners of War Memorial & Center Drive	
LU4: Playfields, Old Shelter House, Open Air Theater, Community House	
LU5: Grove of Remembrance & Northwest Grove	
LU6: The Sledding Hill & Northeast Area	

GARFIELD PARK CULTURAL LANDSCAPE REPORT

Table of Contents

CHAPTER IV: EXISTING CONDITIONS	IV.1
A. Introduction	IV.1
B. 2004 Landscape Character	IV.2
LU1: The Conservatory & Sunken Gardens	
LU2: Bean Creek & Pleasant Run	
LU3: Confederate Prisoners of War Memorial & Center Drive Walk	
LU4: Playfields, Pagoda (Old Shelter House), MacAllister Center for the Performing Arts (Amphitheater), Garfield Arts Center (Community House) & Burrello Family Center	
LU5: Grove of Remembrance & Northwest Grove	
LU6: The Sledding Hill & Northeast Area	
C. Garfield Park Vegetation Patterns	IV.10
D. Tree Inventory Methods & Findings	IV.11
D1. Tree Inventory Methodology	
D2. Tree Inventory Results	
D3. Tree Inventory Observations	
E. Park Architecture & Structures Overview	IV.15
CHAPTER V: LANDSCAPE CHANGE 1930s TO 2004	V.1
A. Introduction	V.1
B. General Landscape Change 1930s to 2004	V.2
B1. Park Drive System	
B2. Park Path System	
B3. Park Streams & Water Features	
B4. Park Vegetation Types	
B5. Park Structures	
C. Changes in Landscape Units	V.5
LU1: Conservatory & Sunken Gardens	
LU2: Bean Creek & Pleasant Run	
LU3: Confederate Prisoners of War Memorial & Center Drive Walk	
LU4: Playfields, Pagoda, MacAllister Performing Arts Center, Garfield Arts Center, Burrello Family Center	
LU5: Grove of Remembrance & Northwest Grove	
LU6: The Sledding Hill & Northeast Area	
D. Conclusion	V.8
CHAPTER VI: PARK USE & USER SURVEY	VI.1
A. Introduction to Park Use	VI.1
B. Types of Park Use	VI.1
C. User Survey Methodology	VI.2
D. User Survey Results	
D1. Demographics of Park User Survey Respondents	
D2. Park Visit Frequency, Duration, & Transportation	

HERITAGE LANDSCAPES

Preservation Landscape Architects & Planners

GARFIELD PARK CULTURAL LANDSCAPE REPORT

Table of Contents

D3. Current Range of Park Uses	
D4. Park Feature & Facility Condition Ratings	
D5. What Do You Like Best?	
D6. What Do You Like Least?	
D7. Suggested Improvements	
E. User Survey Conclusion	VI.6

CHAPTER VII: MAINTENANCE & OPERATIONS, FACILITIES & PROGRAMS

.....	VII.1
A. Introduction	VII.1
B. Indy Parks & Recreation Overview	VII.2
C. Partnerships for Parks, Friends of Garfield Park	VII.4
D. Indy Parks Maintenance	VII.5
E. Parks Funding, Rentals & Events	VII.6
F. Safety & Security	VII.8
G. Dogs in the Parks & Related Issues	VII.8
H. Garfield Park Facilities Operation & Maintenance	VII.8
H1. Conservatory, Sunken Gardens & Overlook	
H2. MacAllister Center for the Performing Arts, Amphitheater	
H3. The Community Center / Arts Center	
H4. Pagoda	
H5. Burrello Family Center	
I. Conclusion Maintenance & Operations, Facilities & Programs	VII.12

CHAPTER VIII: HISTORIC PARK LANDSCAPE PRESERVATION TREATMENT

RECOMMENDATIONS	VIII.1
A. Introduction	VIII.1
B. Exploration of Landscape Treatment Alternatives	VIII.3
C. Rehabilitation Treatment.....	VIII.4
D. Overall Park Landscape Treatment Recommendations	VIII.5
E. Renewing Park Landscape Scenery.....	VIII.6
E1. Maintain Park Trees & Renew Tree Plantings	
E2. Expand Interior Park Green Spaces for Scenery	
E3. Manage Scenic Steams & Stream Banks	
E4. Recreate the Lake as “Pleasant Pond”	
E5. Improve the Landscape & Views Along the Drives	
E6. Replace Parking Lots with Parking Along Drives	
E7. Preserve & Repair Historic Park Bridges	
E8. Renewing Park Landscape Scenery, Summary Recommendations	
F. Connecting People to the Park	VIII.12
F1. Expand the Pedestrian Path System & Link Paths Among All Destinations	
F2. Shape Paths with Scenic Landscape	

HERITAGE LANDSCAPES

Preservation Landscape Architects & Planners

GARFIELD PARK CULTURAL LANDSCAPE REPORT

Table of Contents

F3. Achieve Disabled access Grades to Extent Possible	
F5. Add & Improve Steps Where Needed	
F6. Restore Pedestrian Bridge Connecting the Sunken Gardens & MacAllister Center	
G. Share the Road, Balancing Vehicle & Pedestrian Uses	VIII.15
G1. Slow & Calm Park Traffic	
G2. Reorganize the Use of Park Drives	
G3. Develop an Event Circulation Pattern	
G4. Rethink Current Parking Lots	
H. Recapturing Park Water	VIII.17
H1. Recapture the Water Landscapes of Garfield Park for Scenery & Recreation	
H2. Work to Improve Water Quality in Bean Creek and Pleasant Run	
I. Extend Sunken Gardens Horticulture, Pools & Habitat	VIII.19
I1. Improve Drainage & Soils in the Sunken Garden & Restore Center Beds	
I2. Reconstruct Lily Pools	
I3. Recreate the Inlet from Bean Creek	
I4. Replant the Rock Garden Area	
J. Improving Other Park Features & Facilities	VIII.20
J1. Adding Accessible Restrooms	
J2. Conserving Park Monuments & Memorials	
K. Enhancing Park Interpretation & Public Knowledge	VIII.21
L. Enhancing Park-Wide Coordination	VIII.22
M. Summary Recommended Approach & Initial Priorities	VIII.23
APPENDIX A: CHRONOLOGY	AppA.1
APPENDIX B: GARFIELD PARK TREE INVENTORY CATEGORIES & SPECIES LIST	AppB.1
APPENDIX C: GARFIELD PARK TREE INVENTORY	AppC.Spreadsheet.1
APPENDIX D: USER SURVEY & RESULTS	AppD.1



GARFIELD PARK CULTURAL LANDSCAPE REPORT

List of Figures

Codes are used to designate the sources for each of the figures presented in the captions listed for each chapter. These codes are abbreviated versions of the names of the image sources.

HL	Heritage Landscapes, Preservation Landscape Architects & Planners
IHPC	Indiana Historic Preservation Commission
IHS	Indiana Historical Society
IMCPL	Indianapolis Central Public Library
ISL	Indiana State Library
NRHP	National Registration of Historic Places Registration Form, for the Indianapolis Park and Boulevard System, prepared by Storrow Kinsella Associates
WES	Westerly Group Inc.

Chapter II GARFIELD PARK HISTORY

- Figure II.1** *1889 Atlas of Indianapolis and Marion County* shows Garfield Park and vicinity with large lots and few houses around the park. (R-1889GriffingAtlas.jpg IMCPL)
- Figure II.2** 1893 photograph showing recently planted trees and mature trees along a curving park drive. (R-23-71893 (1901).jpg IMCPL)
- Figure II.3** Early twentieth century view of Bean Creek that appears to be a natural stream course with aquatic and bank vegetation, relatively unaltered from its pre-park development appearance. (R-ISL-15.jpg ISL)
- Figure II.4** ‘Garfield Park Lake’ and dam in 1896. The photograph shows remnants of the original forest. (R-ISL-13.jpg ISL)
- Figure II.5** Rental boats and the pavilion on the lake in 1898. Mature trees are behind the pavilion and the residential park edge can be seen. (R-ISL-11.jpg ISL)
- Figure II.6** Lombardy poplars, of substantial size, planted in formal lines with lawns and ornamental flowerbeds in 1901. (R-6-24-1901GP0001.jpg ISL)
- Figure II.7** The banks of Bean Creek are well tended in this pre-1906 image showing banks of uniform long turf and individual trees. (R-PO391_0000_0100_Void_Block_Bridge.jpg IHS)

GARFIELD PARK CULTURAL LANDSCAPE REPORT

List of Figures

- Figure II.8** The refined character of park landscape seen here with gently sloping lawns, curving beds, trees, and benches, 1914. (R-LP0008_11191ldscp.jpg IHS)
- Figure II.9** 1899 *Bicycle and Driving Map* of Indianapolis, with Garfield Park drives, watercourse, and new park entrance. (R-ISL-bicycle1899 map.jpg ISL)
- Figure II.10** The first of the arched stone bridges over Bean Creek, built in 1896, with railings in the block-and-void style, and the park landscape of rolling turf, paths, drives, and new and older trees, 1906. (R-PO130_811void bridge.jpg IHS)
- Figure II.11** Bean Creek, bridge and park landscape with the distinctive roofline of the Pagoda in the mid-ground, circa 1910. (R-PO391_0000_0100_201792bridge_pagoda.jpg IHS)
- Figure II.12** An event in Garfield Park in 1901, with audience, turf under shade trees, movable wood and iron benches, and a shelter with a band playing in the background. (R-6-24-1901Gppeople in park.jpg ISL)
- Figure II.13** Park users standing on the new reinforced-concrete bridge over Pleasant Run looking over the reshaped banks and broad, reflective water, 1908. (R-LP0008_1158boys on bridge.jpg IHS)
- Figure II.14** Garfield Park, Indianapolis, Indiana. Prepared for the Board of Park Commissioners. George E. Kessler, Landscape Architect, St. Louis, 1913. (NRHP)
- Figure II.15** Kessler’s vision of the Garfield Gardens as “a picture of living color” showing the floral display, elevation of the Outlook, and the Conservatory drive, circa 1920. (R-PO391_1987_0211_pc_overlook.jpg IHS)
- Figure II.16** Conservatory, Outlook and Garfield Gardens with floral display, fountains, and custom designed furnishings in 1920. (R-PO130_51093-F_cons-SG.jpg IHS)
- Figure II.17** Garfield Gardens (Sunken Gardens) in its early years showing the axial, symmetrical layout around the central fountains with planting urns and garden bedding patterns. (R-PO130_67143-F_SG.jpg IHS)
- Figure II.18** The custom designed two-tone brick walk, benches, and lampposts of the Sunken Gardens are complemented by the geometric patterns of turf, floral bedding, and massed perennial planting. (R-PO130_71763-F_Sgwalk.jpg IHS)
- Figure II.19** The lush plantings seen here in 1937 correspond to Kessler’s vision and the build-out of the Sunken Gardens. (R-PO130_238280F-H_SG.jpg IHS)
- Figure II.20** Curving, ornamental pools with water lilies, fish, and decorative edge plantings seen on the south side of the Sunken Gardens in this 1937 photo. These pools

GARFIELD PARK CULTURAL LANDSCAPE REPORT

List of Figures

were probably matched on the north side. (R-PO130_238280F-D_SG_pools.jpg IHS)

Figure II.21 The General Lawton monument installation ceremony, December 1915, showing the generally open area and the wide drives. (R-LP0008_15548_Lawton.jpg IHS)

Figure II.22 The banks of Pleasant Run circa 1908, showing the access to the water by graded lawns alternating with groves of trees. (R-PO391_A27005_Prbanks.jpg IHS)

Figure II.23 Stone-clad bridge over Pleasant Run showing low winter water and meandering stream, 24 Feb., 1935. (R-PO354_People_On_Bridge.jpg IHS)

Figure II.24 The new aluminum frame Conservatory circa 1956 to 1963 showing tall, standard streetlights replacing the original light posts. One original bollard light is visible near the stairs. (R-2_Cons'56.jpg IHPC)

Figure II.25 The Sunken Gardens circa mid-1960s. Floral display and the fountains are still the same but street-style light fixtures have been introduced and the walk shows wear and weather damage. (R-PO391_2002_0211_81482-B_SG'60s.jpg IHS)

Chapter III 1930s AS-BUILT CHARACTER

Figure III.1 Baist Map of Indianapolis, 1941, showing park drives, streams, structures, and surrounding neighborhood with small residential lots. (R-Baist1941.jpg ISL)

Figure III.2 Panoramic view of the Conservatory and Sunken Gardens in 1923 clearly showing the three levels and symmetrical arrangement of steps, walks, beds, turf, and fountains. (R-PO130_56061-F.jpg ISL)

Figure III.3 A 1910 view of the sledding hill showing mown turf, paths, drive, flowerbed, and individual tree plantings. (R-6-24 1910AR.jpg ISL)

Figure III.4 View west from Conservatory Drive and the Overlook to the Sunken Gardens in 1924. (R-PO130_87105-F_SG.jpg IHS)

Figure III.5 View across the Sunken Gardens toward the Conservatory showing the full vocabulary of brick walks, planters, and light posts in Arts and Crafts style. (R-PO130_238280F-E_SG.jpg IHS)

Figure III.6 Park landscape near General Lawton statue and the Conservatory showing gently sloping and open lawns, shrub masses, a sycamore tree, and an evergreen screen planting. (R-1.jpg IHPC)

Figure III.7 Plat of Garfield Park and Environment, Park Engineers Office, Indianapolis, February, 1939. (GAR_39eng_plan.tif.jpg WES)

GARFIELD PARK CULTURAL LANDSCAPE REPORT

List of Figures

- Figure III.8** View of the Lake at Garfield Park with grassy banks and mature trees. Two small boys and a train in the background are also visible. (R-PO391_A 27002_Lake.jpg IHS)
- Figure III.9** Dappled light on lawn under old and new trees along park drives west of Bean Creek in 1919. (PO130_6714_F.jpg IHS)
- Figure III.10** Postcard view circa 1906 of park gravel drives, turf, young trees, and the distinctive bridge with block-and-void style railings on Bean Creek. (R-PO391_0000.0100_Bridge_1906pc.jpg IHS)
- Figure III.11** Winter view of arc-en-panier style of the Pleasant Run bridge and wooded banks circa 1910. (R-7_bridge.jpg IHPC)
- Figure III.12** View of the reinforced concrete Pagoda Drive bridge built in 1923, with open turf slopes and two trees; the larger one is a native sycamore. (R-8_sbridge.jpg IHPC)
- Figure III.13** View of oriental style Pagoda built in 1903 showing cobblestone structure, multiple curved roofs, iron railing, open turf, and background trees. (R-PO391_A27004_pagoda.jpg IHS)
- Figure III.14** The subway provided vehicular and pedestrian access through the railroad embankment. (R-LP0008_13260_subway.jpg IHS)
- Figure III.15** A 1913 photograph of relatively young planting of deciduous trees with a grove of pines at a corner of Main (Center) Drive. (R-LP0008_6359_pines.jpg IHS)

Chapter IV. EXISTING CONDITIONS

- Figure IV.1** Garfield Park entry triangle at Shelby Street with contemporary signage and perennial planting. (IV-1-HL.jpg)
- Figure IV.2** View from the Conservatory and upper terrace overlooking the Conservatory and entry area with the contemporary ornamental iron gates, iron rail fencing, and the reproduction lampposts. (R-IV-4-HL.jpg (HL))
- Figure IV.3** The Sunken Gardens seen from the north through the perimeter iron rail fencing. (R-IV-5-HL.jpg)
- Figure IV.4** In this twilight view garden details and grade changes are apparent with the lower garden and the higher Overlook and Conservatory. One fountain with typical planting is in the foreground. (R-IV-cons-ftn-HL.jpg)

GARFIELD PARK CULTURAL LANDSCAPE REPORT

List of Figures

- Figure IV.5** The Sunken Gardens looking west from the Overlook, over the central fountain basin to the tree planting along Bean Creek. (R-IV-7-HL.jpg)
- Figure IV.6** The formal, symmetrical composition of lawn panels, plantings and walks in the Sunken Gardens. Light posts, benches, planters, and brick walk patterns replicate the character of the original design. (R-IV-9-HL.jpg)
- Figure IV.7** The Shelby Branch Library and surrounding park along the east perimeter with Shelby Street to the right. (R-IV-11-HL.jpg)
- Figure IV.8** The Garfield Park tennis courts with chain link fencing and cut-off lighting. A variety of mature trees shade the surrounding lawns. (R-IV-12-HL.jpg)
- Figure IV.9** A walkway lined with young red maples is located along the former Conservatory drive with contemporary flagpoles in a planting island bed on the left. The Conservatory and greenhouse complex are in the background. (R-IV-14-HL.jpg)
- Figure IV.10** Stream corridors and vegetation along Pleasant Run (left) and Bean Creek (right) seen from the Pagoda Drive bridge with Burrello Center in the background. (R-IV-15-HL.jpg)
- Figure IV.11** A curving portion of Bean Creek with early successional and invasive species vegetating the banks. (R-IV-119-1950.jpg HL)
- Figure IV.12** 1923 filled-spandrel arch bridge on Pagoda Drive spanning a densely vegetated section of Bean Creek. (R-IV-17-HL.jpg)
- Figure IV.13** Rebuilt 1928 filled-spandrel arch bridge with original stone wing walls and rectilinear concrete railings crossing Pleasant Run. Remnants of the old dam are visible in the lower center of photograph. (R-IV-119-1954.jpg HL)
- Figure IV.14** Foundations of a former pedestrian bridge are visible in Bean Creek on the west side of the Sunken Gardens. (R-IV-23-HL.jpg)
- Figure IV.15** Confederate Prisoners of War Memorial with circular walk and bench surrounded by characteristic landscape pattern of lawn and trees. (R-IV-24-HL.jpg)
- Figure IV.16** Burrello Family Center with basketball court, playgrounds, parking, lawns, and mature trees. (R-IV-25-HL.jpg)
- Figure IV.17** Contemporary Corporate Pavilion surrounded by lawn, north of the MacAllister Center for Performing Arts. (R-IV-26-HL.jpg)
- Figure IV.18** The MacAllister Center for Performing Arts is an open-air amphitheater with fixed and lawn seating, having an audience capacity of about three thousand. (R-IV-27-HL.jpg)

GARFIELD PARK CULTURAL LANDSCAPE REPORT

List of Figures

Figure IV.19 Located along Southern Avenue, the streetcar shelter built in 1905 is used as a picnic shelter. On the left is one of the masonry piers marking the streetcar turning loop. (R-IV-29-HL.jpg) (HL)

Figure IV.20 Restored pagoda with surrounding plantings and the contemporary garden of a park playground. (R-IV-30-HL.jpg)

Figure IV.21 The open landscape of the sledding hill with a group of spruce trees. In the background is a formal line of trees along the park boundary. (R-IV-33-HL.jpg)

Chapter V. LANDSCAPE CHANGE 1930s TO 2003

Figure V.1 A 1924 view from the Conservatory entrance west over the drive, Overlook, and Sunken Gardens with the fountains. The spatial relationships of these elements along the axis are apparent. (R-PO130_87105-F.jpg) (IHS)

Figure V.2 A pedestrian terrace overlooking the Sunken Gardens replaces the Overlook drive today. The steps and axial, symmetrical gardens are similar to the 1924 view. (R-V-2-HL.jpg)

Figure V.3 The 1917 Gardens with formal design, planting, and custom-designed furnishings. The open north boundary with houses is visible. (R-PO130_61798-F.jpg) (IHS)

Figure V.4 From outside the Gardens the new perimeter fence encloses the paths, plantings, and furnishings replicating the historic elements. There are more trees to the north and a single flowering cherry on the right. (R-V-4-HL.jpg)

Figure V.5 The 1920 floral bed at the west end of the Gardens. The strong forms of the exotic tropical plants create a focal point and terminate the axis. (R-PO130_71761-F.jpg) (IHS)

Figure V.6 In 2003, framing a central taro plant, the cannas are still used to achieve a bold texture and effect matching the historic look. A spruce screen, rather than deciduous trees, forms the background. (R-V-6-HL.jpg)

Figure V.7 A 1937 view east across the Gardens to the Overlook and original Conservatory. There were plantings in the central panel at that period. (R-PO130_238280F-C.jpg) (IHS)

Figure V.8 A 2003 view across the Gardens to the present Conservatory with its 1954 Art Deco façade and the contemporary north extension. The center panel is not planted as it was historically. (R-V-8-HL.jpg)

GARFIELD PARK CULTURAL LANDSCAPE REPORT

List of Figures

- Figure V.9** The statue of General Lawton at the time of dedication in 1915. The neighborhood is sparsely built, with new trees planted in the buffer area. No planting has been done around the statue. (R-11.jpg IHPC)
- Figure V.10** In 2003 the statue of General Lawton is backed by mature spruce with the mature buffer of trees beyond. Annuals are planted on the base of the monument. (R-V-10-HL.jpg)
- Figure V.11** An early image of the Pagoda on an undated postcard, circa 1910s. Though renovated twice, the structure has the same materials and details today. (R-O391_000_0100_D6242.jpg IHS)
- Figure V.12** The Pagoda in 2003. Louvered shutters have been added and the access walk is evident from the position of the delivery truck. The trashcans and picnic table are contemporary. On the opposite side of the structure a highly developed garden and playground were recently added. (R-V-12-HL.jpg)
- Figure V.13** The new Olympic-sized swimming pool in 1930 surrounded by maturing trees. (R-PO130_216948-F.jpg IHS)
- Figure V.14** The same view in 2003. The space is now a parking lot for the MacAllister Performing Arts Center and the Garfield Arts Center. (R-V-14-HL.jpg)
- Figure V.15** The Outdoor Shelter or Community House, as it was known at the time of this photograph in 1922. (R-PO130_79673-F.jpg IHS)
- Figure V.16** Now called the Garfield Arts Center, the structure looks the same. The dormers have been changed slightly and flowering crabapples planted along the front. (R-V-16-HL.jpg)
- Figure V.17** In 1922 Community House looked over the extensive playing fields as it does today. The Pagoda with a screen of cedar hedging is visible on the right. (R-PO130_79672_F.jpg IHS)
- Figure V.18** The extent of the playing fields is apparent in this 2003 view of the Garfield Arts Center. The now-mature pines by the Pagoda are visible, and the parking lot in the foreground is contemporary. (R-V-18-HL.jpg)
- Figure V.19** An early postcard view looking south along the wide Main Drive (also labeled Center or Garfield Drive), which could accommodate parking. The rise of the sledding hill is on the left. Dense and varied tree planting is evident. (R-PO391_27003.jpg IHS)
- Figure V.20** A similar view looking north in 2003 with the sledding hill rise on the right. A few of the previous trees remain and others have been planted. The drive is now known as Conservatory Drive. (R-V-20-HL.jpg)

GARFIELD PARK CULTURAL LANDSCAPE REPORT
List of Figures

**Chapter VIII. HISTORIC PARK LANDSCAPE PRESERVATION TREATMENT
RECOMMENDATIONS**

Figure VIII.1 Stone reinforced pond edge with boulder seating at Trout Pond, F.L. Olmsted-designed Seneca Park, Rochester, NY, project for Monroe County Parks, by EDR, PC with Heritage Landscapes and Charles E. Beveridge. (SP-Trout-Pond-stone-edge.jpg, HL, 1998)

Figure VIII.2 Basin constructed in degraded Phipps Run stream channel, Schenley Park, Pittsburgh, by DPW crews under direction of Pittsburgh parks Conservancy and Heritage Landscapes. (SP-PhippsRunBasin.jpg HL, 2004.)

Figure VIII.3 Portion of Flood Insurance Rate Map, Marion County, Indiana, with the park boundary outlined in blue and parkland toned light blue. Map shows the flood limits along Pleasant Run and Bean Creek as they extend through Garfield Park. The gray shaded areas delimit the 100-year flood inundation zones that cover substantial parkland acreage beyond the stream channels. (GP-Flood-Map-park.jpg, provided by Ken Boyce, FOGP.)

Figure VIII.4 Rehabilitated Red Creek Bridge, reinforced concrete bridge project for Olmsted Brothers designed Erie Canal system bridge, Genesee Valley Park, for Monroe County Parks, Clark Patterson Engineers, Heritage Landscapes preservation consultant. (GVP-red-creek-bridge.jpg, HL, 1997)

Figure VIII.5 New deck for increased load and original repaired balustrade on Red Creek Bridge, Genesee Valley Park, for Monroe County Parks, Clark Patterson Engineers, Heritage Landscapes preservation consultant. (GVP-red-creek-bridge-deck.jpg, HL, 1997)

Figure VIII.6 Rehabilitated Picnic Grove with new bathroom structure to the right, Genesee Valley Park, for Monroe County Parks, Clark Patterson Moissen, Heritage Landscapes preservation consultant. (GVP-PicnicGrove-Bathroom.jpg, HL, 1999)



GARFIELD PARK CULTURAL LANDSCAPE REPORT

List of Plans

CHAPTER III: 1930s AS-BUILT CHARACTER

KP1913	Garfield Park Indianapolis, Indiana 1913 Kessler Plan
PP 1930s	1930s Period Plan
AP1937	1937 Aerial Photograph
AP1941	1941 Aerial Photograph
PP-LU	c 1930 Landscape Units Plan

CHAPTER IV: EXISTING CONDITIONS

AP1972	1972 Aerial Photograph
AP2002	2002 Aerial Photograph
EC	Existing Conditions Plan
EC-LU	Existing Conditions Landscape Units Plan
TS	Tree Survey Plan

CHAPTER V: GARFIELD PARK LANDSCAPE CHANGE 1930s TO 2003

PP-DP	c 1930 Drives & Parking Plan
EC-DP	Existing Conditions Drives & Parking Plan
PP-PP	c 1930 Paths Plan
EC-PP	Existing Conditions Paths Plan
PP-SP	c 1930 Streams, Lake & Pools Plan
EC-SP	Existing Conditions Streams & Pools Plan
PP-VP	c 1930 Vegetation Plan
EC-VP	Existing Conditions Vegetation Plan

CHAPTER VIII: HISTORIC PARK LANDSCAPE PRESERVATION TREATMENT RECOMMENDATIONS

LT	Landscape Treatment Plan
CC	Circulation Concepts Plan
VC	Vegetation & Water Concepts Plan

GARFIELD PARK CULTURAL LANDSCAPE REPORT
List of Plans